



Penrhos House Brynrefail

, Dulas, LL70 9PX

Offers Over £775,000



Situated in the quiet village of Brynrefail, Dulas, in a fine coastal location on the east coast of Anglesey, the sale of Penrhos House provides an excellent opportunity to acquire a small equestrian holding of 4 acres, and which includes a substantial 4 bedroom, 2 reception and 2 bathroom family home together with a modern 2 bedroom annex while to the outside there are 4 acres, stables, barn and menage. There are delightful views to the rear towards Dulas beach over the sea towards the Great Orme, and indeed the sandy beach at Dulas is about a half a mile walk away.

This house is a rare find, combining spacious living with a coastal setting. Whether you are looking to settle down with your family or seeking a property that offers both comfort and style, this home is sure to impress. Do not miss the chance to make this delightful property your own.



Location

Located in the quiet hamlet of Brynrefail, Penrhos House is well placed for many of the coastal and rural attractions to be found on the island, including the beaches of Dulas and Lligwy Bay, the picturesque resort of Moelfre, the larger village of Benllech with its renowned sandy beach as well Red Wharf Bay. Easy access is enabled via the A55 expressway, which is approximately 10 miles from the property, allowing rapid commuting throughout the island, to the mainland. The nearby market towns of Amlwch and Llangefni and their neighbouring communities ensure that with a wide range of shops, services and recreational facilities, your essential needs are well catered for. A little further afield, the port town of Holyhead with its deep water marina is ideal for sailing enthusiasts and also offers daily ferry crossings to and from Ireland and a first rate inter-city train service.

Entrance Porch 11'6" x 4'5" (3.53 x 1.36)

With double glazed surround and central entrance door. Wide opening to :

Reception Hall 11'6" x 11'5" (3.51 x 3.50)

With a stained timber stair case to the first floor, radiator, partitioned cloak cupboard with ample coat hanging space.

Sitting Room 21'6" x 14'7" (6.56 x 4.47)

A very spacious and naturally light living area with dual aspect to the front and rear, and to include a feature local stone inglenook fireplace housing a large woodburning stove with timber lintel over. Pendant light, and wall lights, radiator, tv and telephone connection.

Inner Hall 11'10" x 9'6" (3.63 x 2.91)

Being an open link for the lounge, sitting room and kitchen.

Lounge 27'1" x 15'4" (8.26 x 4.68)

An outstanding living space having two near full length rear aspect windows to give panoramic sea views over open countryside, underfloor heating, ceiling downlights, TV connection. walk in store room with shelving. Internal connecting door to the annex.

Kitchen/Breakfast Room 25'11" x 10'2" (7.90 x 3.10)

Opening up onto a Conservatory type extension and which gives this room excellent natural daylight. Extensive range of base and wall units in a white laminate finish with ample worktop surfaces and tiled surround. 5 ring electric cooker with two ovens and extractor fan over, and a further integrated eye level double oven and separate microwave. integrated dishwasher, tiled floor, door to the garden.

Shower Room 6'11" x 5'1" (2.12 x 1.56)

With fully tiled walls and panelled ceiling with downlights as well as a tiled floor. Large shower enclosure with electric shower control, w.c, wash basin with large mirror over. Towel radiator.

Bedroom Four 10'9" x 10'3" (3.28 x 3.13)

With dual aspect windows, radiator, laminate floor covering.

First Floor Landing

Bedroom One 14'9" x 14'9" (4.52 x 4.51)

With a feature of double opening double glazed doors onto a spacious tiled balcony which gives superb sea and coastline views. Full height fitted and deep wardrobes to one wall. Radiator.

Bedroom Two 11'4" x 8'7" (3.47 x 2.62)

Again enjoying panoramic sea and coastal views. Radiator.

Bedroom Three 14'0" x 12'5" (4.28 x 3.79)

Having a gable window and two velux windows, radiator. Access to eaves storage area.

Study 7'4" x 5'5" (2.24 x 1.66)

With rural views towards Bodafon mountain. Radiator.

Bathroom 10'8" x 5'5" (3.26 x 1.66)

Having a modern white suite comprising a panelled bath, wash basin in a vanity cupboard and under a rear aspect window giving panoramic sea views. w.c. laminated floor covering, towel radiator.

Adjoining Annex

Being self contained, having its own front and back entrance, but also with an internal link door to the main house.

Living Area 12'10" x 9'4" (3.93 x 2.87)

With both front entrance door and rear door to a patio area which enjoys panoramic sea and mountain views. Radiator, t.v. connection, timber laminate flooring.

Kitchen 10'10" x 6'9" (3.31 x 2.07)

With a good range of base and wall units in a white laminate finish with contrasting dark worktop surfaces and tiled surround. Integrated gas hob with extractor over and oven under. Recess for a washing machine and space for a fridge/freezer. 'Franke' stainless steel sink unit under a wide rear aspect window to enjoy panoramic sea and coastline views. Tiled floor.

Bathroom 10'5" x 6'2" (3.18 x 1.88)

Having fully tiled walls and floor and a four piece suite in white comprising a panelled bath, shower enclosure with thermostatic shower control. wash basin, w.c. Towel radiator.

Annex Bedroom One 16'7" x 9'10" (5.08 x 3.01)

With wide double opening and double glazed doors onto a private timber deck balcony , from where there are glorious sea and coastal views. Radiator, connecting door to the main house.

Annex Bedroom Two 14'5" x 12'7" (4.41 x 3.85)

With dual aspect front windows. Radiator.

Outside

Access off the A5025 leads to a very spacious stone gravelled entrance, giving ample parking for several cars, as well as lawned gardens with shrubbery and trees. This drive also gives access to the detached double garage. Just off the kitchen to the rear is a large paved and timber decked patio with gazebo, to enjoy a private space to enjoy the outstanding sea views. This area leads down to a wide lawned garden which includes a timber shed, and with access through onto the menage.

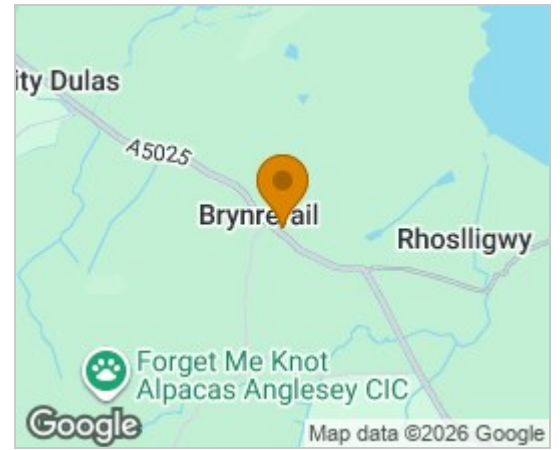
Double Garage

Double garage with two up and over doors and used as a utility area with worktop surfaces and sink unit, plumbing for a washing machine. Store cupboard housing a 'Worcester' oil central heating boiler.

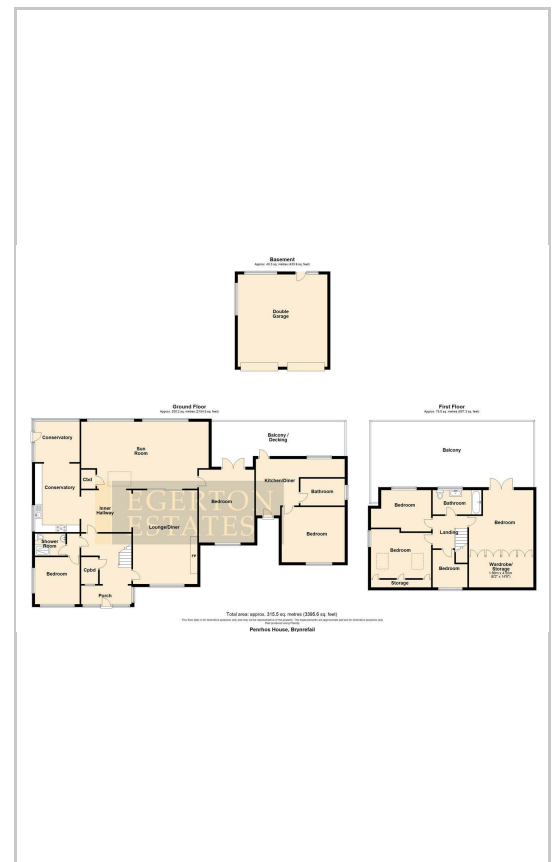
Static Caravan 32 x 12 (9.75m x 3.66m)

Willerby 6 berth, connected to the services.

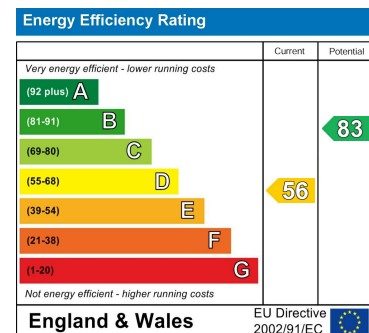
Area Map



Floor Plans



Energy Efficiency Graph



These particulars, whilst believed to be accurate are set out as a general outline only for guidance and do not constitute any part of an offer or contract. Intending purchasers should not rely on them as statements of representation of fact, but must satisfy themselves by inspection or otherwise as to their accuracy. No person in this firms employment has the authority to make or give any representation or warranty in respect of the property.